

CATER-*PREP*

Light Duty Meat Mincer - Instruction Manual

Model: CK0555A



To avoid risk of accidents or damage to the appliance, it is essential to read these instructions before it is installed and used for the first time.

Caterkwik Ltd

The Lakeland Catering Centre
Newlands
Ulverston
Cumbria
LA12 7QQ

01229 480001

info@caterkwik.co.uk





Light Duty Meat Mincer - Instruction Manual

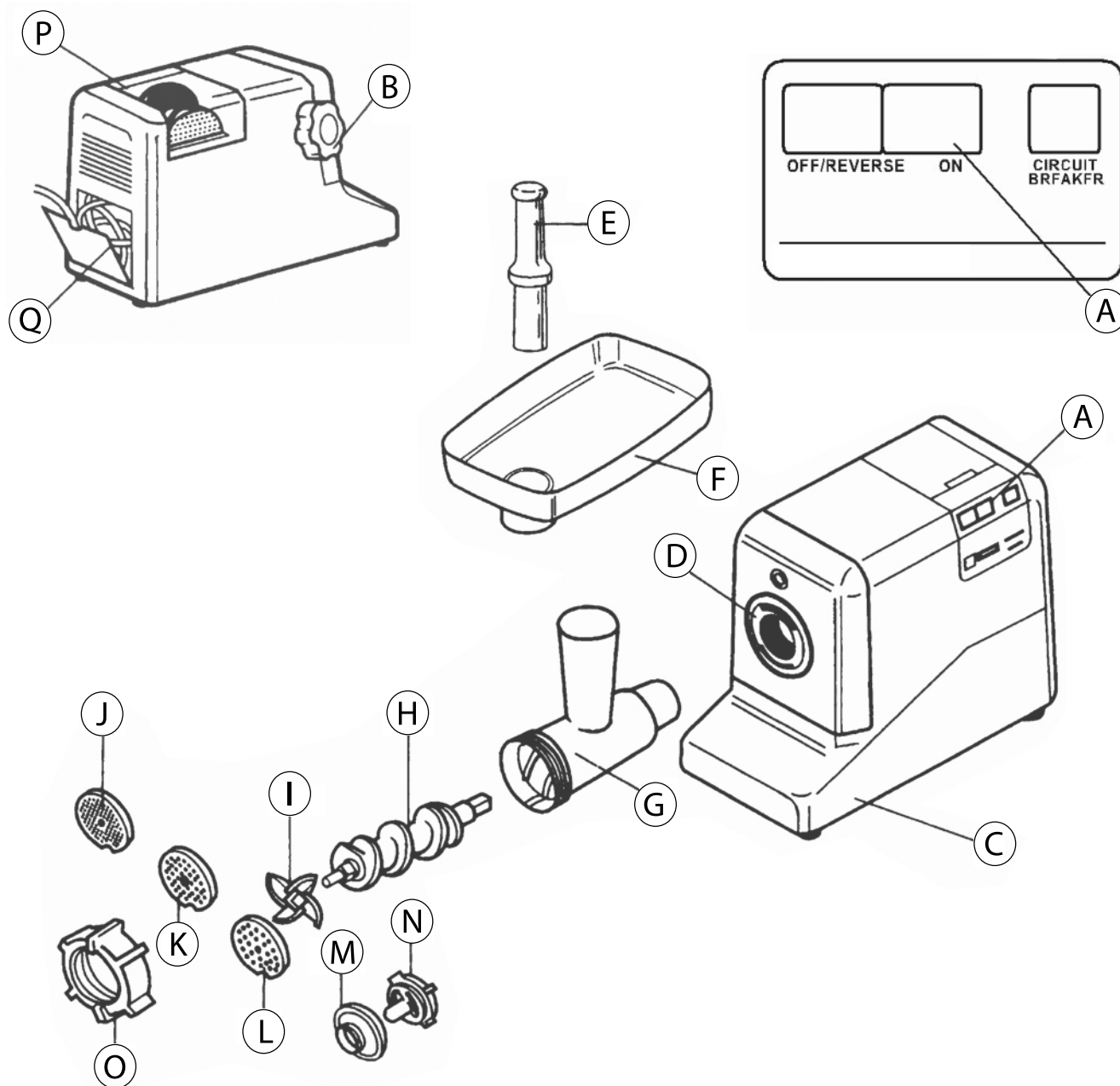
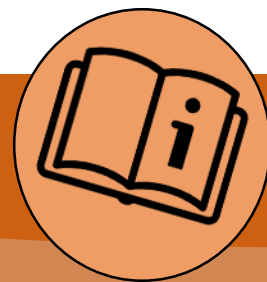
Precautions

Before using the electrical appliance, the following precautions should always be followed:

- Before use, check the voltage of the wall outlet corresponds to the one shown on the rating plate.
- Unplug from the outlet when not in use, before fitting or removing parts and before cleaning. Clean motor housing with damp cloth and wipe dry. Don't immerse in water or rinse.
- This appliance is not intended for use by persons (including children) with reduced physical, sensory or mental capabilities, or lack of experience or knowledge, unless they have been given supervision or instruction concerning use of the appliance by a person responsible for their safety.
- Close supervision is necessary for any appliance being used near children. Never leave children unattended near the appliance.
- Do not operate the appliance with a damaged supply cord or plug or if the product malfunctions, is dropped or damaged in any manner.
- Never reach into the feeding tube with your fingers or an object while the appliance is running. Only use the pusher for this purpose.
- Do not let the supply cord hang over the edge of a table or a worktop, or a hot surface.
- Make sure all the parts are correctly assembled and the locking knob is locked before you turn the appliance on.
- Switch the appliance off before changing any attachments or approaching parts that move.
- Keep your hands, hair, clothing or any other utensils away from the mincer during operation.
- The reverse function is prohibited while the appliance is in use. Wait at least 6 seconds until the appliance has completely stopped or it could result in damage to the appliance.
- Do not grind hard food or hard fibre foods such as bones or ginger.
- This appliance is equipped with a safety thermostat. If the motor overheats then the appliance will automatically switch off. If this happens you should switch the appliance off and wait until it fully cools down. Once cool you can resume operation. It is recommended to be used for no more than one hour continuously.
- Do not clean the parts in a dishwasher.
- The appliance is equipped with over load protection. It will automatically switch off when overloaded. If this happens. Allow it to cool down for 30 minutes, then press the overload protection button on the bottom of the motor housing.

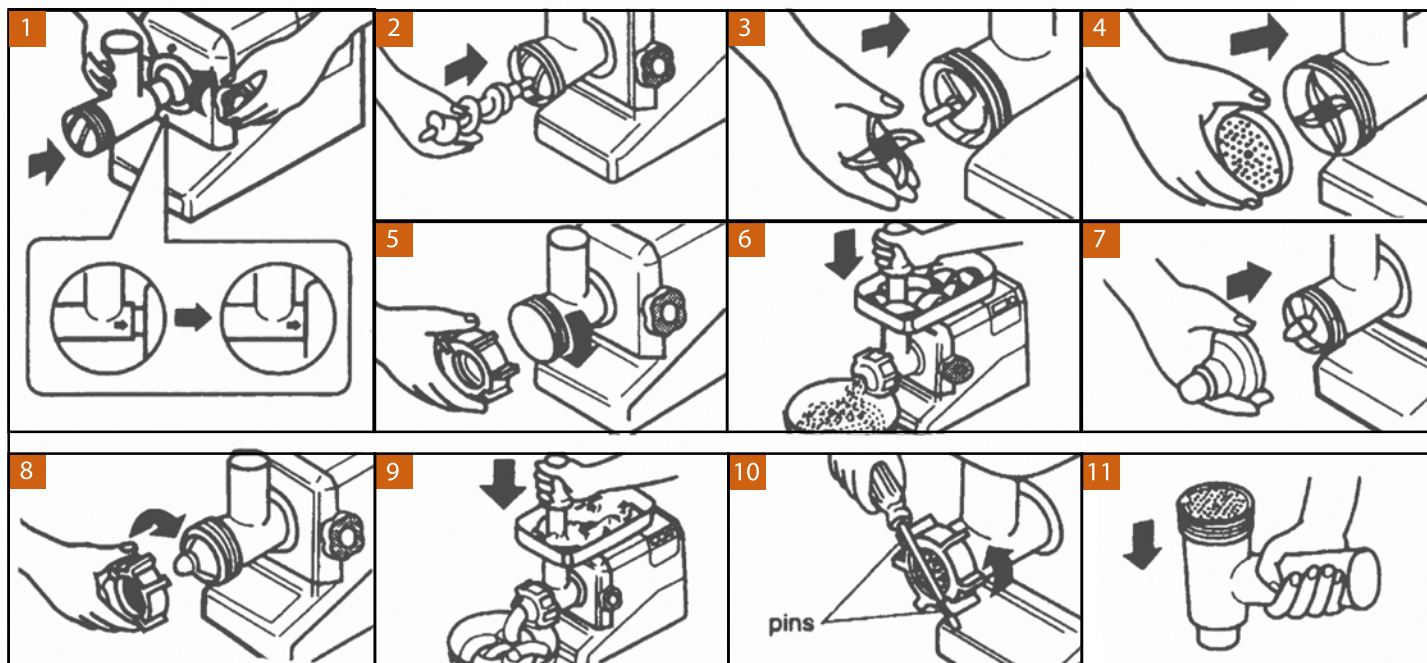
Light Duty Meat Mincer- Instruction Manual

Parts



Light Duty Meat Mincer- Instruction Manual

Assembly



Before Use

- Make sure the voltage and frequency on the data plate are the same as your local supply.
- Wash all parts except those that do not touch food (A, B, C, D, P and Q) in warm soapy water.
- Before plugging in, make sure the switch is in the off position.



Light Duty Meat Mincer- Instruction Manual

Assembly

Assembling The Mincer

- 1** Place the Head tightly onto the Opening of the Motor Housing. Holding the Head with one hand, place the Locking knob into the hole on the side of the Motor Housing and tighten it by turning it clockwise.
- 2** Place the Feed Screw into the Head, long end first, by turning the Feed Screw slightly until it is set into the Motor Housing.
- 3** Place the Cutting Blade onto the Feed Screw shaft with the blade facing to the front as illustrated.
 - If it does not fit properly, the meat will not grind.
- 4** Place the desired Cutting Plate next to the Cutting Blade, fitting protrusions in the slots.
- 5** Screw the cap into place until it is tight.
 - Do not over tighten.

Place Hopper Plate on Head and fix into position.

Locate the unit on a firm surface.

- The air passage at the bottom and the side of the Motor Housing should be kept free and not blocked.

Mincing Meat

- 6** Feed food into the Hopper Plate.
 - Use the food Pusher.

After use, switch off and unplug.

Cautions

- Unplug the appliance when assembling or disassembling.
- When carrying the unit, ensure you hold the Motor Housing with both hands, DO NOT hold by the hopper plate only.
- DO NOT fix the Cutting Blade and Cutting Plate when using the Kubbe attachments.
- NEVER feed food into the mincer using your hand, use the food pusher.
- Do NOT grind hard food such as bones or nuts.
- DO NOT grind ginger or other food with hard fibre.
- To avoid blockages, do not use excessive force to operate the unit with excessive pressure.
- If the unit jams due to hard materials lodging onto the Feed Screw or Cutting Blade, switch the appliance off immediately.



Light Duty Meat Mincer- Instruction Manual

Cleaning & Maintenance

Cautions

- When the circuit breaker activates, DO NOT switch the appliance on.
- When switching from ON to OF or REVERSE or vice versa, wait at least 6 seconds to ensure the motor has stopped completely.
- Never try to remove the parts to repair the unit. In case of the appliance malfunctioning contact Caterkwik Service Department (01229 480001).
- This product is for light duty use ONLY.

Cleaning

Disassembling

Make sure that the motor has completely stopped before disassembling.

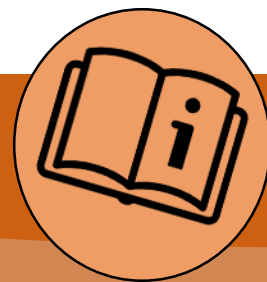
- 10** Dissassemble the appliance by reversing the steps for assembling.

The Cap has pins for convenient unscrewing.

- 11** To remove the Cutting Plate easily, knock the head on the table with the cutting plate facing up.

Cleaning

- Remove any meat or foodstuff.
- Wash each part with warm soapy water.
- A bleaching solution containing Chlorine will discolour aluminium surfaces.
- Do not immerse the Motor Housing in water - ONLY wipe it with a damp cloth.
- Thinners and benzines will crack or change the colour of the unit.
- A little salad oil on 'H' after washing and drying will keep them lubricated.



Technical Specification	
Productivity	113 Kg/h
Voltage	220 - 240V
Motor	300W
Power Supply	50/60Hz
Dimensions	430 x 180 x 418mm
Weight	6kg
Packed Weight	11kg